

Welcome

Today's event aims to:

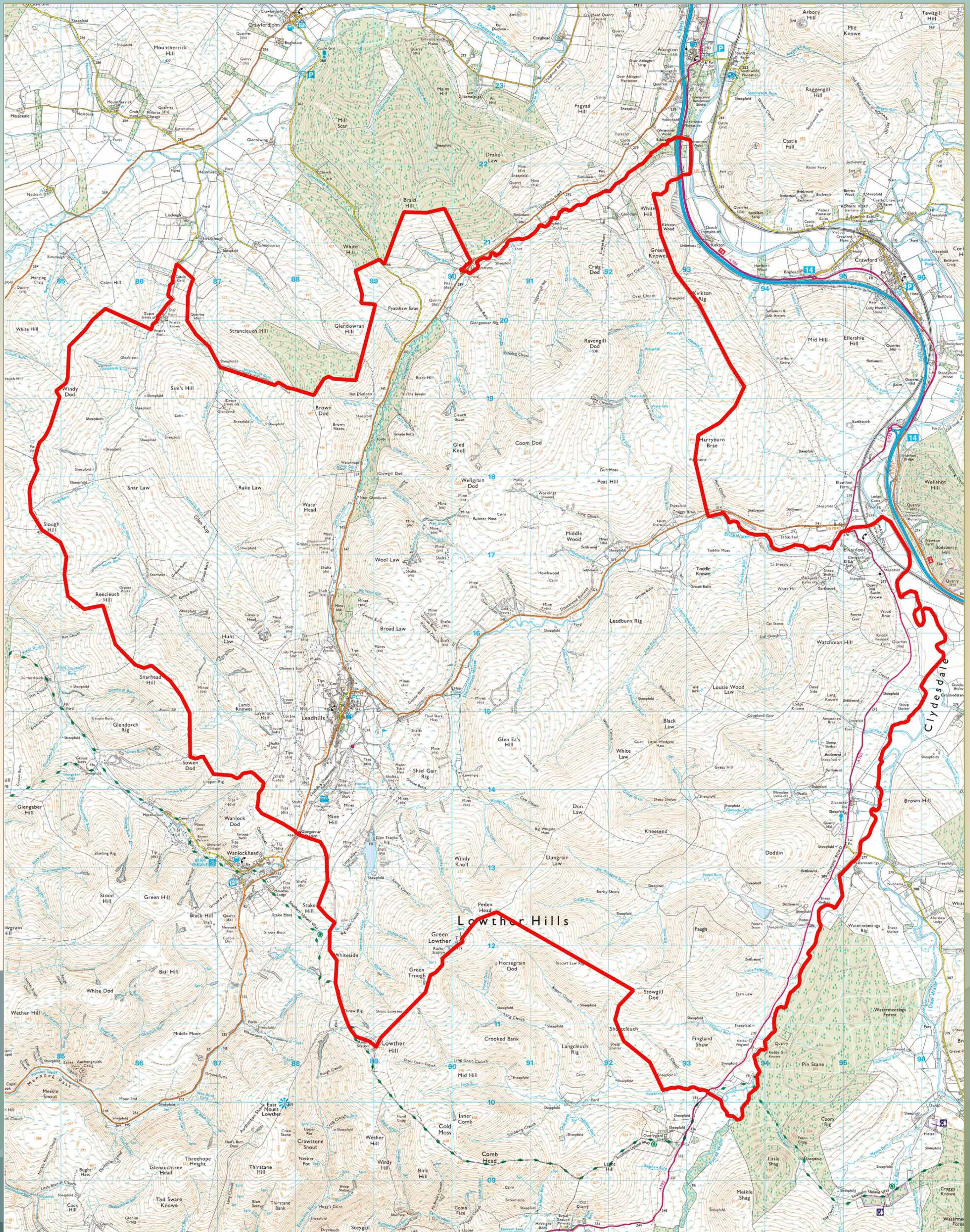
- Meet key individuals representing the Trustees of Leadhills Estate
- Give an overview of the Estate's activities
- Share our medium and long-term plans for the Estate
- Hear your views and ambitions for Leadhills Community

The Trustees of Leadhills Estate are committed to continuing our ongoing dialogue with the local community and stakeholders to find ways in which the Estate and Leadhills village can work in partnership to support the regeneration and sustainability of the local area.

Thank you very much for taking the time to attend today.



Lord Hopetoun



Leisure & Recreation

Leadhills Estate is enjoyed by many thousands of people each year.

Our role as custodians is to balance leisure uses with protecting habitats and the viability of businesses and the livelihoods of those who work within them.

WHAT'S ON OFFER...

Golf course

Leadhills Golf Club

Narrow gauge railway

Lowthers Railway Society

Winter ski facility

Lowther Hills Ski Club

Walking

The nearby Southern Upland Way & network of paths on the Estate

Cycling

Angling

Leadhills Angling Club and UCAPA

History & heritage

Geocaching

OUR CURRENT PROPOSALS

- **Develop formal Leadhills village path network** and links with long distance access networks and between communities in conjunction with the local community
- **Promote Glenfranka (Leadhills) Reservoir** for informal recreation in conjunction with Leadhills Angling Club
- **Work with individuals to develop new business ideas** and support local tourism providers to develop their facilities and services
- **Improve interpretation** of roadside mining history

Our strategy is to secure a sustainable future for the Estate and we are committed to doing this in collaboration with the local community.

Landscape & conservation

Leadhills is a nationally-important landscape and environment of heather moorland and habitat for waders. It also has a unique geological status, reflected in two SSSIs.

The Estate looks after this habitat through a careful heather burning programme, grazing management, bracken control and re-seeding of heather areas, and the important wader populations are monitored by the RSPB.



OUR CURRENT PROPOSALS

The estate aims to safeguard and enhance the environment and landscape.

- **An ongoing programme** of bracken control, heather re-seeding and molinia grass treatment
- **Continued wetland management** for waders at Glengeith and Glenochar
- **Replanting** of Waterhead plantation, partly as broadleaf riparian woodland along the waterside in its current location, partly at Glenochar
- **Planning of amenity tree planting** within Leadhills village in conjunction with local community
- **Improved fencing** and grazing controls to protect heather habitats

Heritage

Leadhills Estate has a rich and varied history reaching back to prehistory leaving a legacy of archaeological and historical remains including:

- **Scheduled Ancient Monuments (SAMs) reflecting ancient platform settlements,**
- **the remains of a Roman road,**
- **three bastle settlements,**
- **extensive mining remains.**

Within Leadhills Estate, there are several vernacular farm steadings, dykes and stells, which are an integral part of the local landscape.



OUR PROPOSALS

We aim to preserve these historical features, and our plans over the next period are:

- **work with Biggar Museum Trust** on reinstatement of Glenochar Farmtoun Trail and oversight of other bastle house remains
- **Remedial works to Glenfranka Reservoir** to meet revised statutory requirements
- **Continued maintenance** of vernacular buildings, dykes and stells
- **Full mapping of historic mineshafts** and adits and continued safety measures

The Community

Leadhills Estate has a shared vision to see improved local employment opportunities with better services and infrastructure.

Our work to date has included:

-
- Strathclyde Fire and Rescue new community fire station
-
- Support to Leadhills Miners' Library
-
- Road improvements in partnership with Community Council
-
- Village amenity improvements with South Lanarkshire Council
-



OUR PROPOSALS

Our aim is to work with communities and other stakeholders on agreed priorities, which might include:

- A **maintenance and improvement plan** for unadopted roads
- An effective **water management** plan
- A village **amenity management** and improvement plan
- Provision of **work and retail units** and housing sites subject to demand
- Provision of **sites for village amenities**
- **Improvement and future-proofing** of broadband services at Elvanfoot

We also plan to work with Royal Highland Education Trust on links with local schools.

Property

The Estate provides homes for local people, places of work for local businesses and key infrastructure for local and national services.



OUR PROPOSALS

Our aim is to provide good quality facilities for local people, and our immediate priorities would be:

- **Continued provision of housing sites** at Elvanfoot and Leadhills subject to demand
- **Development of business/work units** to facilitate local economic development and employment subject to demand
- **Planned maintenance programme** for all buildings using reliable, local contractors
- **Improvement of energy efficiency** in let properties
- **Refurbishment** of Glencaple Farmhouse

Farming & Field Sports

Farming and field sports are a significant employer in the local area and play a part in the general balance of the Estate.

5 full-time staff are employed, with further part-time and indirect staff supported.

There are over 3500 blackface and cheviot ewes managed on an extensive basis, delivering environmental benefits.

The grouse moor is currently maintained on a “care and maintenance” basis. It is our intention to deliver smaller let shooting days underpinning the proven environmental benefits of legal vermin control and habitat management.

The Estate is resolute in its rejection of wildlife crime and has put in place systems and safeguards to ensure best practice operations. The Estate is also an enthusiastic participant in the voluntary moratorium on the culling of mountain hares and is pleased to see hare populations (along with those of grouse, waders, raptors and others) recovering from the difficult springs in 2015/6.

OUR PROPOSALS

We aim to run sustainable businesses, which contribute to the wider environmental, employment, cultural and tourism aims. Our immediate plans are:

- **Employ a further keeper**
- **Continued investment in fencing** (over 190 km in total!), dyking and road maintenance
- **Continued investment in molinia treatment** and habitat management of hill and in-bye fields
- **Absolute attention** to ensuring that all reasonable measures are taken to prevent wildlife crime

Renewable Energy

Innogy Renewables UK Limited approached the estate having been in discussion with a neighbouring landowner.

They propose to install and operate 17 wind turbines across the two estates on land located approximately 2km north west of Elvanfoot, between 2.5km and 5km north east of Leadhills village and Wanlockhead and 5.5km south west of Crawfordjohn.

The proposed development would be known as **Harryburn Wind Farm**. If successful it will generate funds that will allow further investment in the area.



Further details of our plans are contained in “Leadhills Estate and Harryburn Windfarm” available at www.leadhillsestate.co.uk or hard copies by request.

Innogy’s planning application can be viewed at www.iam.innogy.com/en

Tell us what you think

The Trustees are very much aware of the importance of a thriving Estate and the benefit that brings it to the Community.

We are committed to undertaking meaningful engagement with the Community to understand their views as to how we support locally-led initiatives that will further enhance the area.

Please fill in the form available [here today](#) or email enquiries@leadhillsestate.co.uk

Next steps

Thank you for your time here today. We will gather the information provided and feedback to the community via the Community Council on the key findings.

